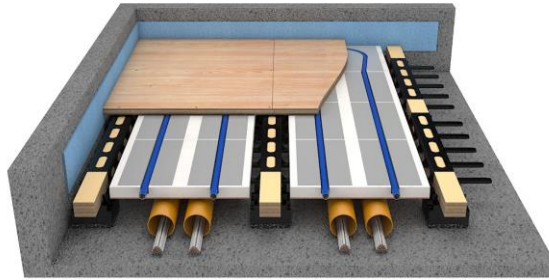


System Construction Data Sheet LD-02

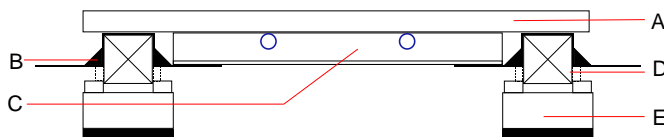


System Description

18mm ply wood structural deck mechanically fixed to battens. EPS 150 kPa EPS heating elements with 0.5mm aluminium diffuser plates resting on recycled polypropylene saddles. Laminated timber battens installed within New Era acoustic cradle

Construction height	mm	74-431
Construction weight	kg/m ²	21
Thermal Conductivity λ	W/mK	0.14
Thermal resistance R	m ² K/W	0.76
UDL	kN/m ²	5
Point Load	kN	3.5
Sound reduction	rd Δ Lw	24
Pipe centres	mm	155
Pipe diameter	mm	16
Heat output	refer to heat output data	

Construction section



A	18mm ply wood deck
B	Saddle
C	EPS heating element
D	Laminated timber batten 46mm W x 48mm H
E	Acoustic cradle