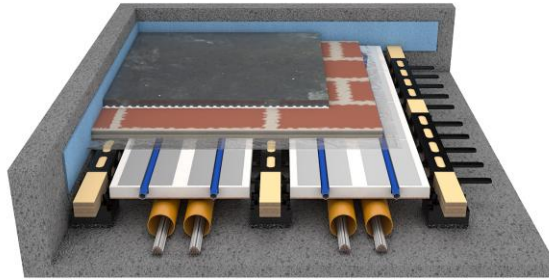


System Construction Data Sheet LD-03

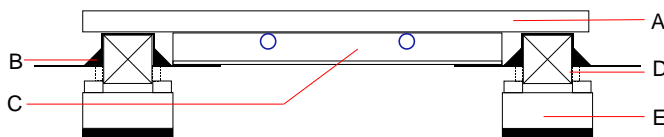


System Description

20mm ceramic deck floating on heating system and battens. Clear slip membrane over EPS 150 kPa EPS heating elements with 0.5mm aluminium diffuser plates resting on recycled polypropylene saddles. Laminated timber battens installed within New Era acoustic cradle

|                                |                          |        |
|--------------------------------|--------------------------|--------|
| Construction height            | mm                       | 74-431 |
| Construction weight            | kg/m <sup>2</sup>        | 47     |
| Thermal Conductivity $\lambda$ | W/mK                     | 0.14   |
| Thermal resistance R           | m <sup>2</sup> K/W       | 0.13   |
| UDL                            | kN/m <sup>2</sup>        | 5      |
| Point Load                     | kN                       | 5      |
| Sound reduction                | rd $\Delta$ Lw           | 24     |
| Pipe centres                   | mm                       | 155    |
| Pipe diameter                  | mm                       | 16     |
| Heat output                    | refer to heat ouput data |        |

Construction section



|   |   |
|---|---|
| A | 20 mm Screed Replacement Tile           |
| B | Saddle                                  |
| C | EPS heating element                     |
| D | Laminated timber batten 46mm W x 48mm H |
| E | Acoustic cradle                         |